

Pyure Mini[®] Optic Replacement Guide

⚠ **Caution:** DISCONNECT the unit from an electrical power source before performing any maintenance or cleaning on the unit.

Supplies:

- Powder-free latex gloves
- PH2 Philips screwdriver
- Eye protection

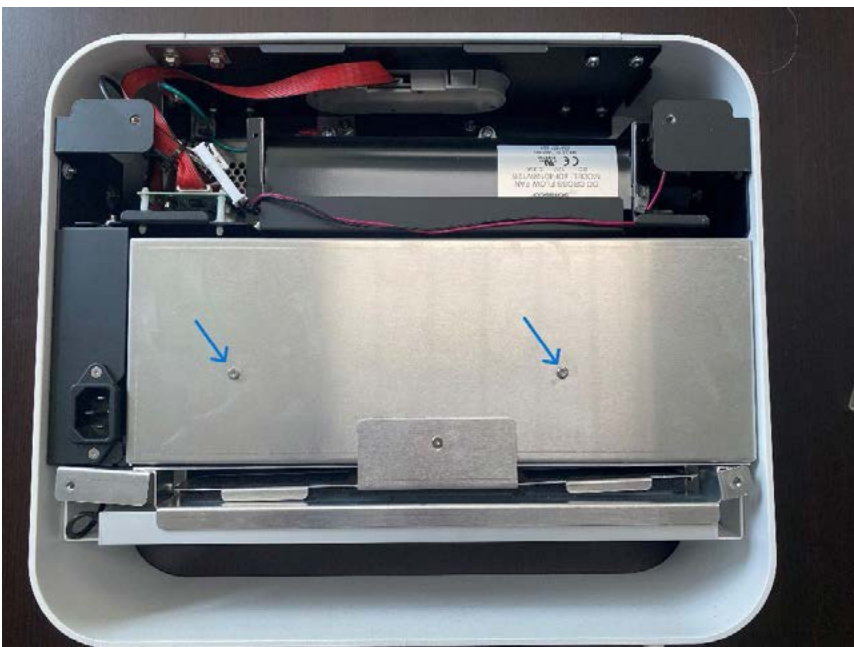
Ensure the unit is unplugged.

Wear gloves when handling optics (in case of breakage, and because the oils in your hand can affect the performance of the optics).

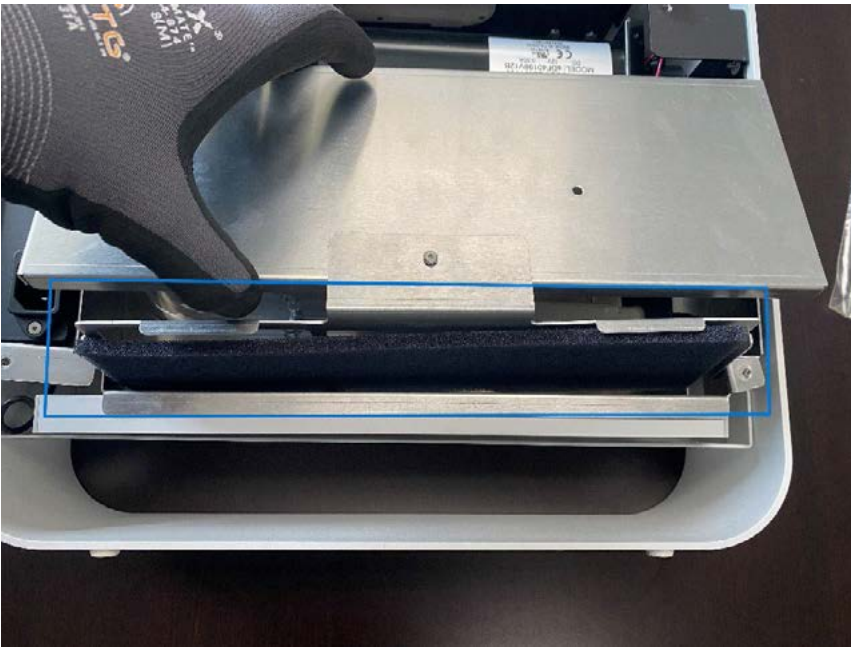
Eye protection is recommended.

Loosen and remove the 4 screws shown to remove the back cover.

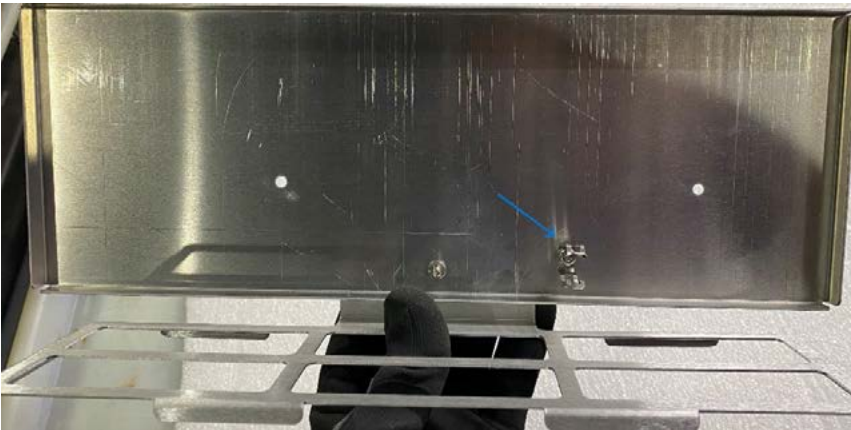
Loosen and remove the 2 screws shown to open the optic chamber.



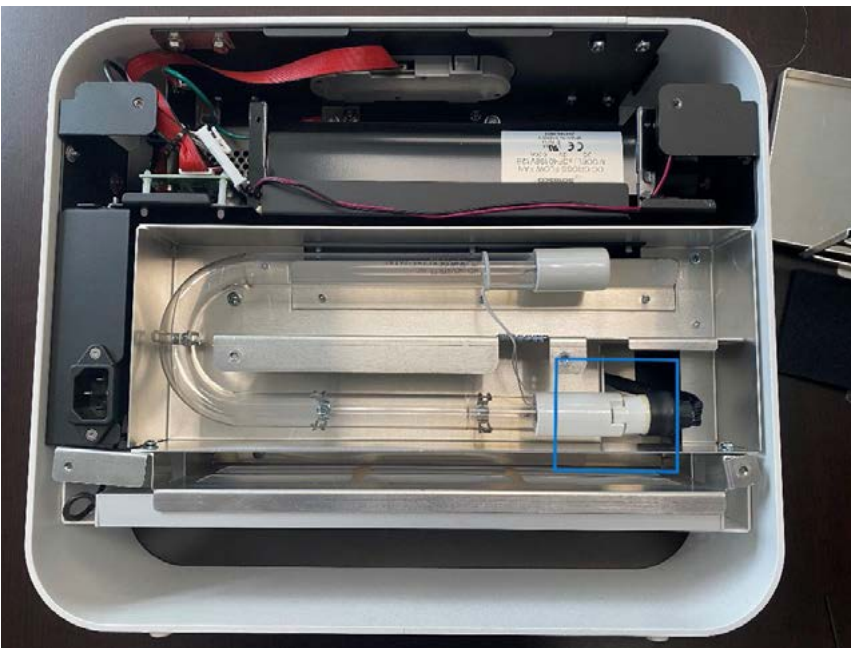
Note: Filter location



Note: Optional optic clip that might be located on the underside of the optic chamber cover.



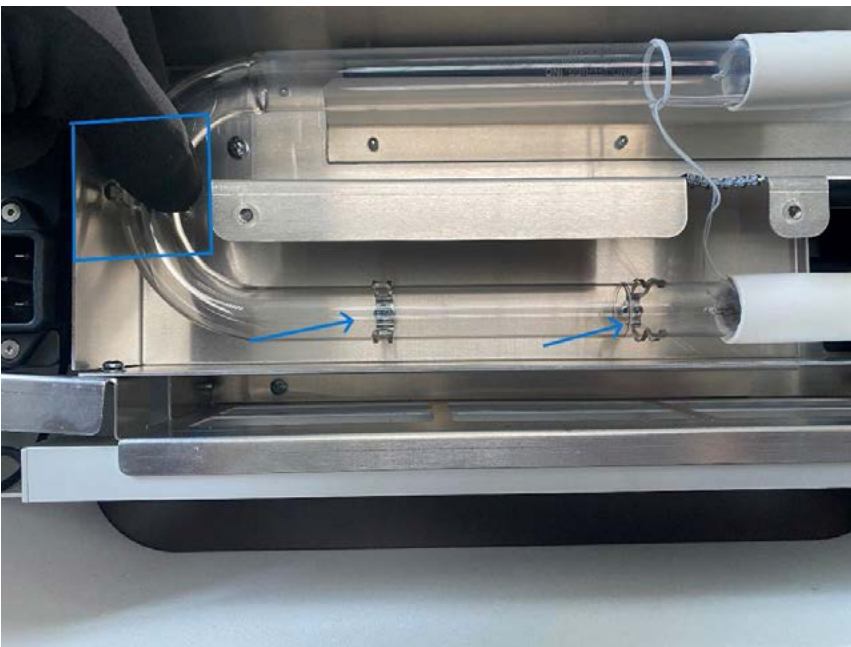
Locate where the optic is connected to the optic harness cable.



Disconnect the optic harness cable from the old optic.



Lift one side of the optic from the optic clips. Gently remove the old optic and discard it safely.





Connect the new optic to the optic harness cable.



Gently place the new optic into the optic clips.

Replace the optic chamber cover using the 2 screws.

Replace the back cover and secure the 4 screws.

Your optic replacement is complete!

If you experience any difficulties, please contact your distributor or pyure.com/contact.

